

Image Error Level Analysis

Details

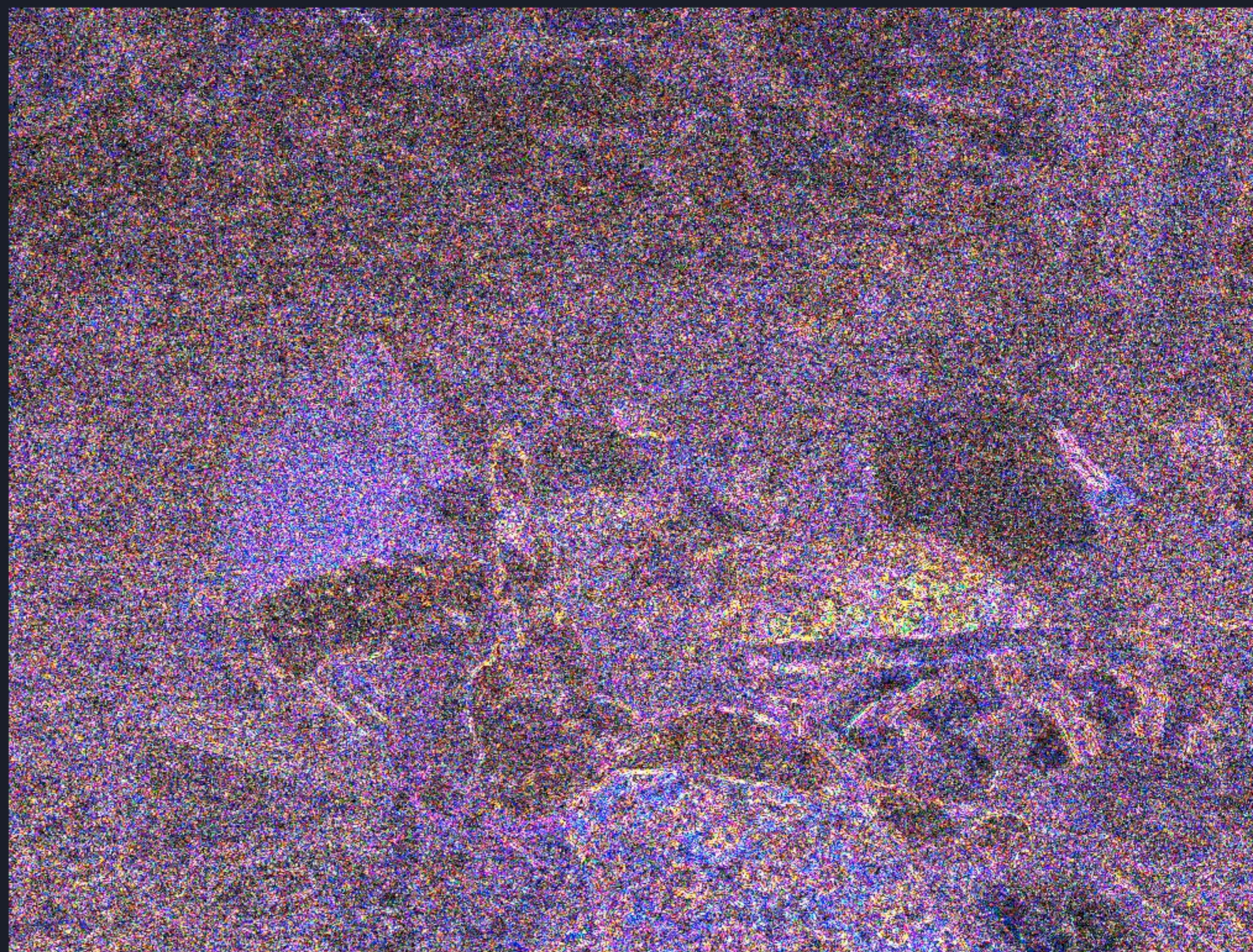
url: <http://groundviews.o...>

status: complete.

permalink: </f17c543>

resolution: 1024 x 768 px

Results



Explanation

Error level analysis is a quick and easy image forensics method, allowing one to determine if an image has been modified by programs such as Adobe Photoshop.

It works by resaving an image at a known quality, and comparing that to the original image. As a jpeg image is resaved over and over again, its image quality decreases. When we resave an image and compare it to the original, we can guess just how many times the image has been resaved. If an image has not been manipulated, all parts of the image should have been saved an equal amount of times. If parts of the image are from different source files, they may have been saved a number of different times, and thus they will stand out as a different colour in the ELA test.

It is worth noting that edges and areas red in colour are often depicted as brighter in the ELA tests. This due to the way the photos are saved by various programs. It is not proof that image was manipulated.

If you are unsure how to interpret the results, please do not claim the results of this tool as proof of anything.